

# Stamford Quadrangle Bedrock Geology Map w/ Explanation and Cross-Sections

Explanation

Map

Cross-Sections

## NOTICE !

This document contains unpublished maps, cross-sections, and related information archived by the State Geological and Natural History Survey of Connecticut as part of the Survey Library Collection.

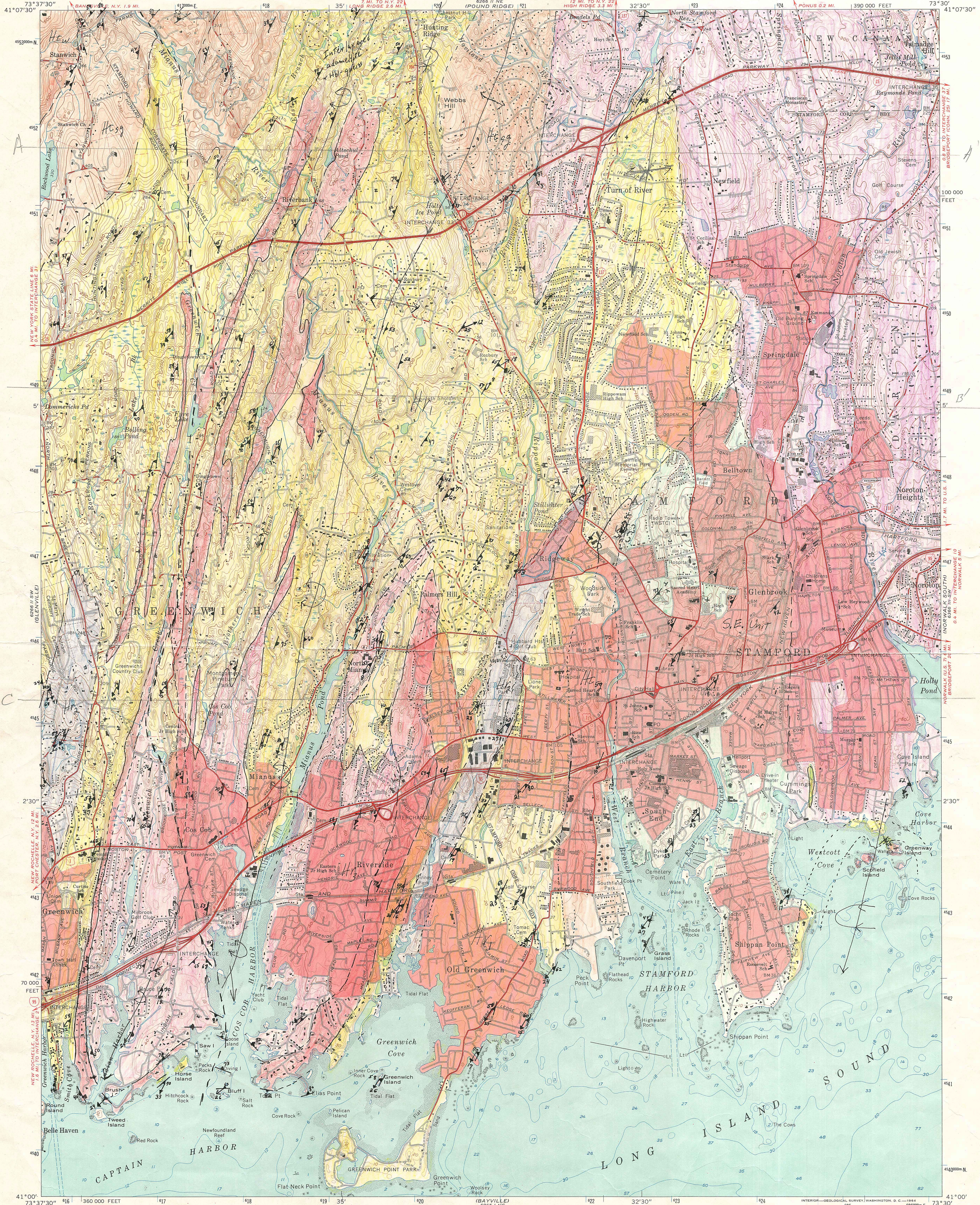
These materials have not been reviewed for accuracy, consistency, or completeness. For many geographic areas, more current information exists, either in published or unpublished form.

For the most part, these materials were developed under research and mapping agreements between the State Geological Survey and individual scientists, academic institutions, or graduate students. Some of these materials have been received by the State Geological Survey as donations. The veracity of the information contained within these documents is the responsibility of the authorship. The State Geological and Natural History Survey of Connecticut, does not promote or endorse this content, nor does the State Survey attest as to its level of accuracy.

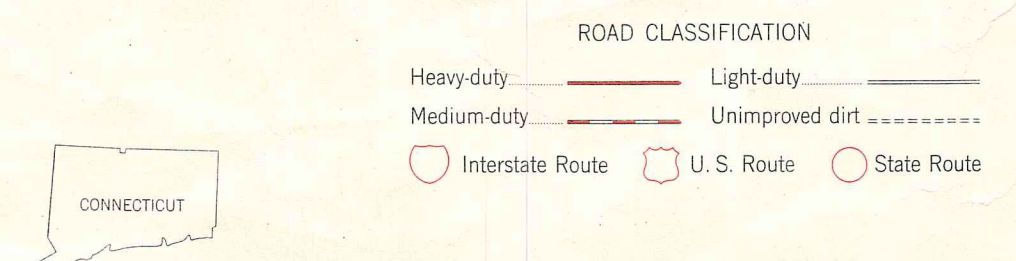
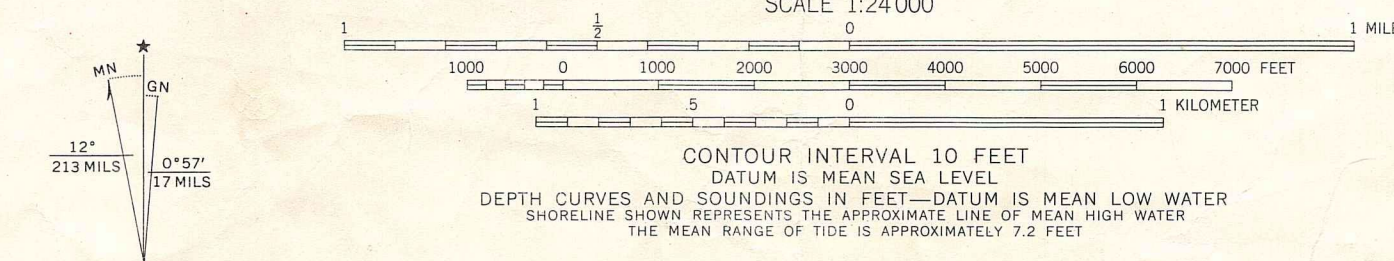
These materials have been preserved under a cooperative agreement between the State Geological Survey and the US Geological Survey as part of the National Geological and Geophysical Data Preservation Program. [www.datapreservation.usgs.gov](http://www.datapreservation.usgs.gov)

These materials are offered in the spirit of open government. Reproduction of these manuscripts was conducted to the highest practical degree, within the parameters of the funding mechanism. Original documents are available for inspection by contacting the [Connecticut State Geologist](#).





Mapped, edited, and published by the Geological Survey  
Control by USGS, USC&GS, USCE, and Connecticut Geodetic Survey  
Topography by photogrammetric methods from aerial photographs  
taken 1949. Field checked 1951. Revised 1960  
Selected hydrographic data compiled from USC&GS Charts 221 and 222  
(1959). This information is not intended for navigational purposes  
Polyconic projection. 1927 North American datum  
10,000-foot grid based on Connecticut coordinate system  
1000-meter Universal Transverse Mercator grid ticks,  
zone 18, shown in blue  
Fine red dashed lines indicate selected fence and field lines where  
generally visible on aerial photographs. This information is unchecked  
Red tint indicates areas in which only landmark buildings are shown



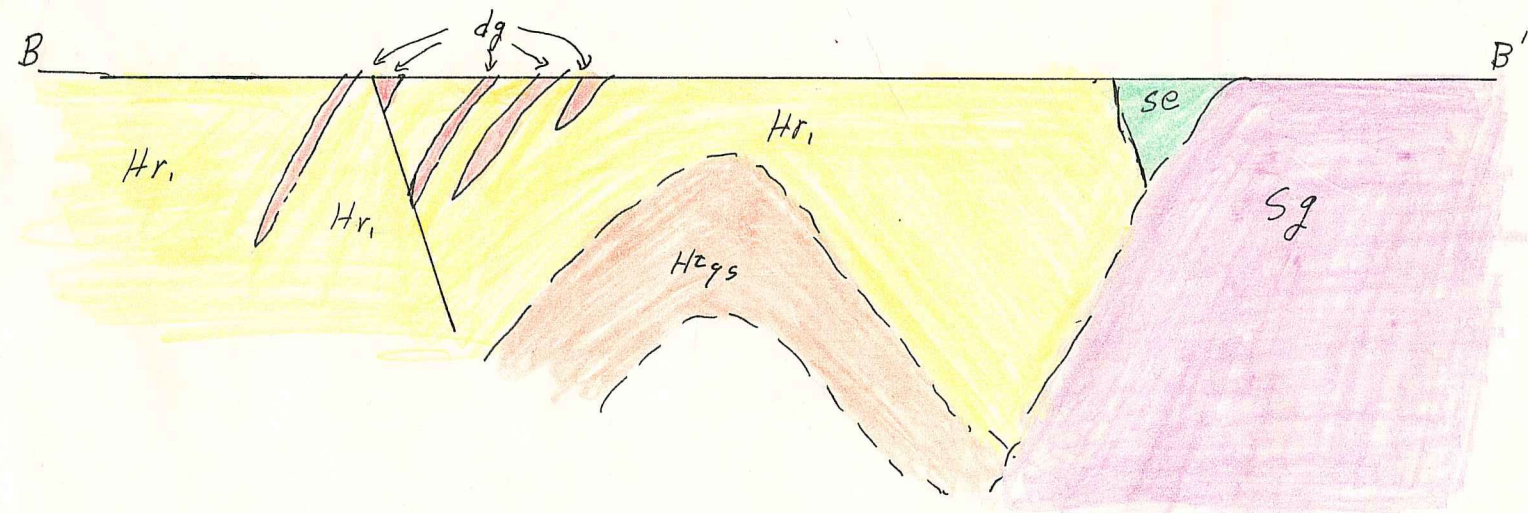
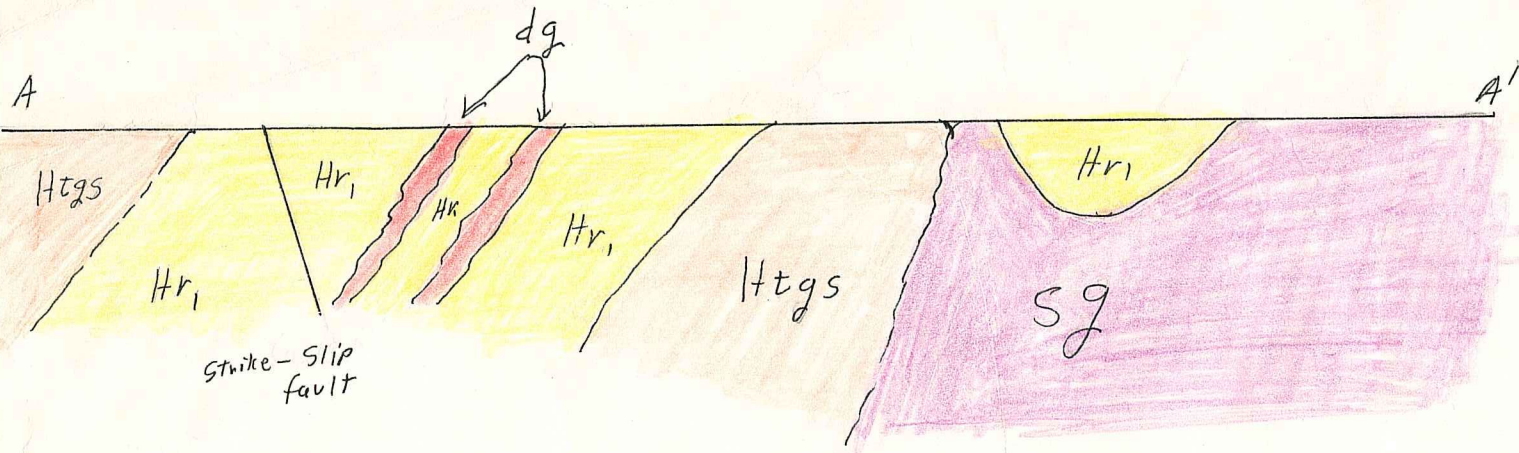
STAMFORD, CONN.  
N4100-W7330/7.5  
1960  
AMS 62611 SE - SERIES V816

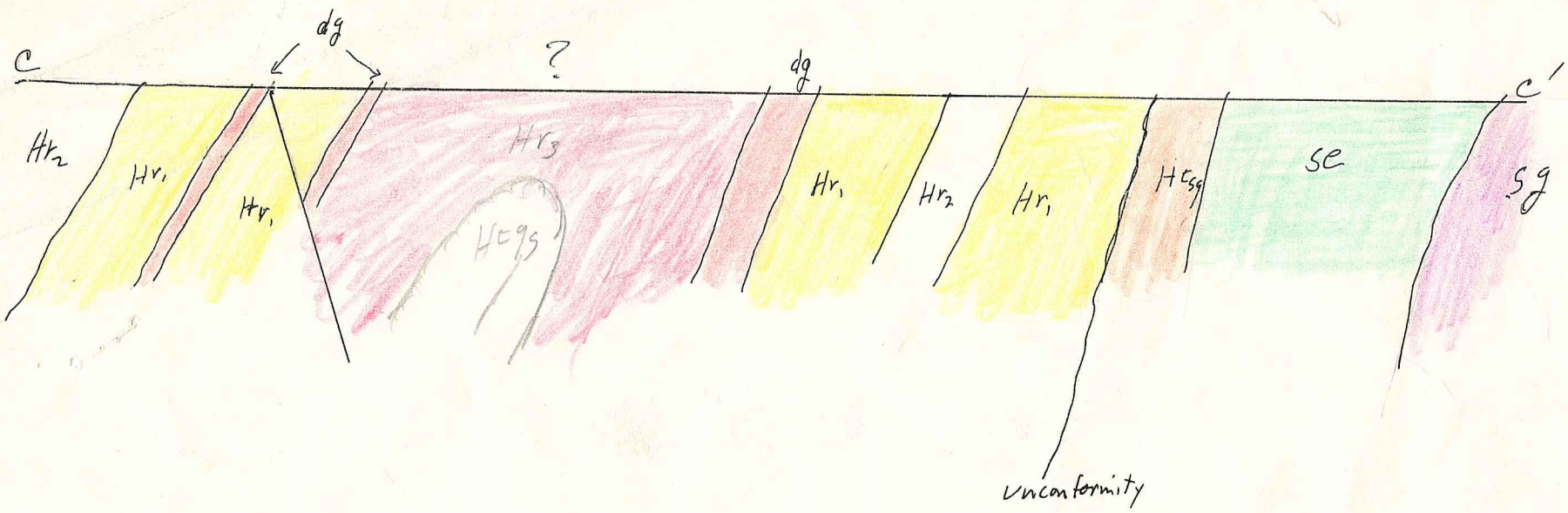
Connecticut Geological and Natural History Survey Library  
Department of Environmental Protection  
79 Elm Street  
Hartford, CT 06106-5127  
(860) 424-3540

Received  
from Frank  
July 26, 1977



Schematic of cross-sections





3 lbs per



Sg

Siscowit granite

Reddish-colored granite containing thin biotite - muscovite seams; Locally contains numerous Amphibolite pods

Dg

Dingle town Gneiss

Light gray, well foliated garnet - muscovite - biotite adamellite gneiss

hk<sub>1</sub>

Harrison gneiss  
Unit 1

Dark gray biotite - hornblende - quartz - feldspar schist and gneiss; The gneiss commonly contains Oligoclase megacrysts

hr<sub>2</sub>

Harrison schist & granulite  
unit 2

funky - weathering garnet - muscovite - biotite - feldspar - quartz schist

hr<sub>3</sub>

Harrison Adamellite  
Unit 3

Biotite - hornblende - quartz - feldspar gneiss interlayered on various scales with well foliated garnet - muscovite - biotite adamellite gneiss containing prominent sillimanite - muscovite - quartz nodules.

se

South End Unit

medium - grained biotite adamellite gneiss with potassium feldspar megacrysts. Amphibolites and biotite - hornblende - quartz - feldspar schists occur locally.

Htsg

Hartland Schist &  
Granulite

Rusty to funky weathering garnet - biotite - muscovite - feldspar quartz schist & biotite - muscovite - quartz gneiss. Schist locally contains sillimanite

Htw

Hartland white gneiss (after Leo Hall)  
white or light grey biotite - muscovite gneiss with local garnet.