

Glenville Quadrangle Bedrock Geology Map 11 w/ Explanation

Leo Hall

Explanation

Map

NOTICE !

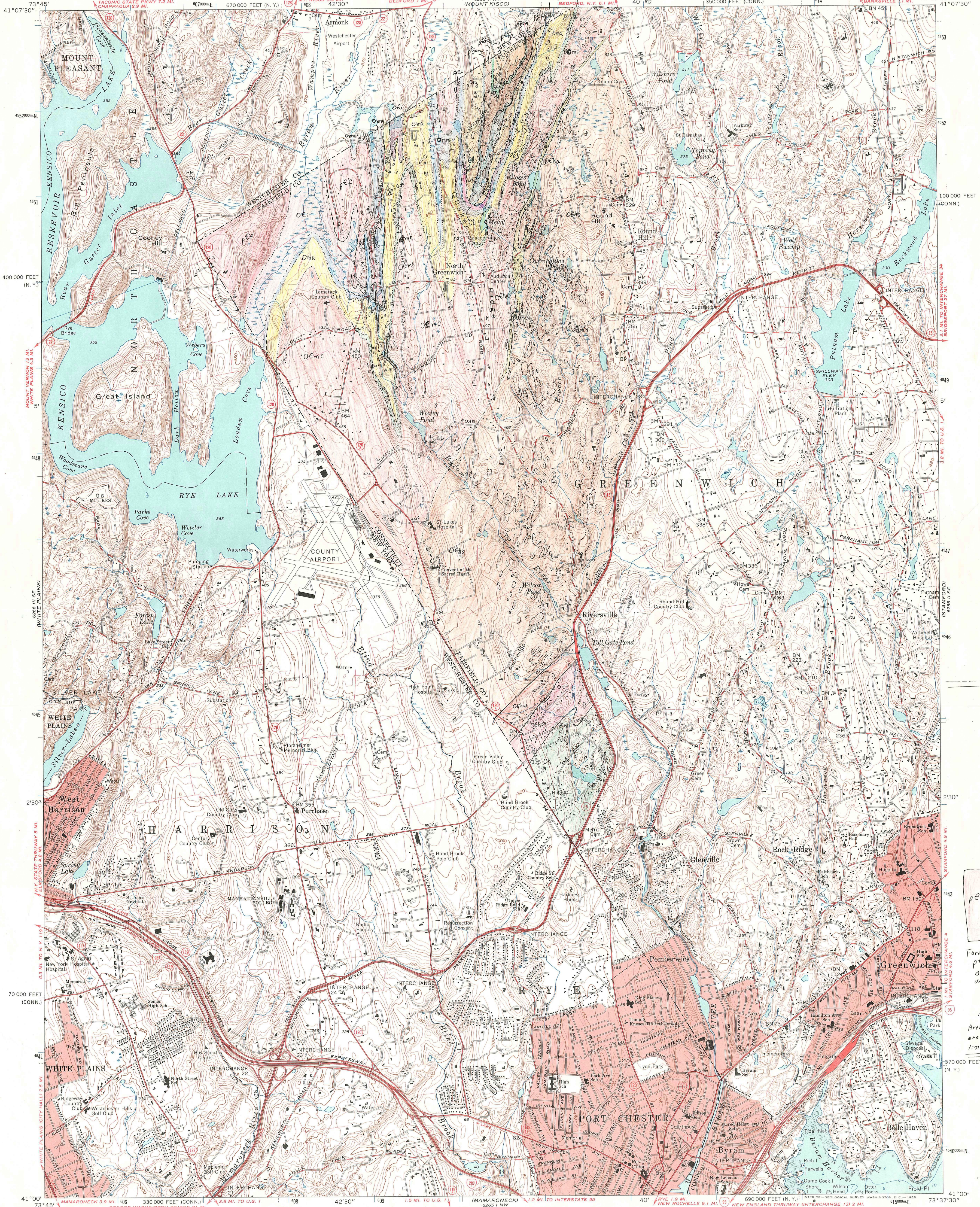
This document contains unpublished maps, cross-sections, and related information archived by the State Geological and Natural History Survey of Connecticut as part of the Survey Library Collection.

These materials have not been reviewed for accuracy, consistency, or completeness. For many geographic areas, more current information exists, either in published or unpublished form.

For the most part, these materials were developed under research and mapping agreements between the State Geological Survey and individual scientists, academic institutions, or graduate students. Some of these materials have been received by the State Geological Survey as donations. The veracity of the information contained within these documents is the responsibility of the authorship. The State Geological and Natural History Survey of Connecticut, does not promote or endorse this content, nor does the State Survey attest as to its level of accuracy.

These materials have been preserved under a cooperative agreement between the State Geological Survey and the US Geological Survey as part of the National Geological and Geophysical Data Preservation Program. www.datapreservation.usgs.gov

These materials are offered in the spirit of open government. Reproduction of these manuscripts was conducted to the highest practical degree, within the parameters of the funding mechanism. Original documents are available for inspection by contacting the [Connecticut State Geologist](#).



Handland Formation

- Ochg Harrison Gneiss
- Ochsg School Gneiss
- Ochw Light-gray gneiss
- Ochs Schists-gneiss amphiboles
- Ocha Amphibolite

Manhattan Schist

- Omc
- Omb
- Oma
- Omm White or tan calcite marble

Oei Inwood Marble

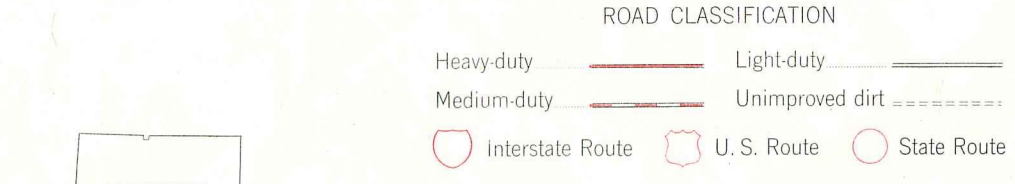
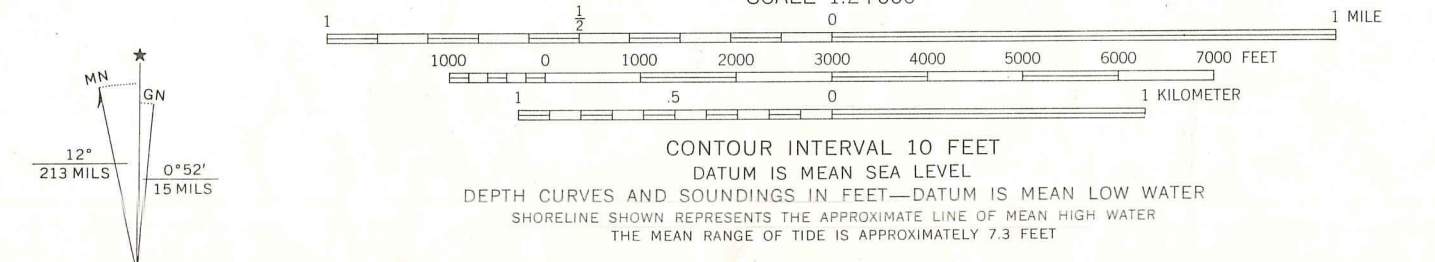
pef

- pefg
- pefcs
- pefmg
- pefp

Fordham Gneiss
pef-undivided gneiss
other units described
on a sheeted sheet.

Areas of outcrop
are within dotted
lines.

Mapped, edited, and published by the Geological Survey
Control by USGS, USC&GS, USCE, and Connecticut Geodetic Survey
Topography by photogrammetric methods from aerial photographs
taken 1949. Field checked 1950-1951. Revised 1960
Selected hydrographic data compiled from USC&GS Chart 222 (1959)
This information is not intended for navigational purposes
Polyconic projection. 1927 North American datum
10,000-foot grids based on Connecticut coordinate system, and
New York coordinate system, east zone
1000-meter Universal Transverse Mercator grid ticks,
zone 18, shown in blue
Fine red dashed lines indicate selected fence and field lines where
generally visible on aerial photographs. This information is unchecked
Red tint indicates areas in which only landmark buildings are shown



GLENVILLE, CONN.—N. Y.
SW/4 STAMFORD 15' QUADRANGLE
N4100—W7337.5/7.5

THIS MAP COMPLIES WITH NATIONAL MAP ACCURACY STANDARDS
FOR SALE BY U. S. GEOLOGICAL SURVEY, WASHINGTON, D. C. 20242
A FOLDER DESCRIBING TOPOGRAPHIC MAPS AND SYMBOLS IS AVAILABLE ON REQUEST

1960
AMS 6266 II SW—SERIES V816

Geology by
Leo Hall

Connecticut Geological and Historical Survey Library
Department of Environment and Natural Resources
79 Elm Street
Hartford, CT 06106-5127
(860) 424-3540

HARRISON gneiss

Xhag, dark gray biotite and/or hornblende
feldspar gneiss with minor amounts of quartz

(Project II)

Connecticut Geological and Natural History Survey Library
Department of Environmental Protection
79 Elm Street
Hartford, CT 06106-5127
(860) 424-3540

FORDHAM formation

- p f, Fordham gneisses, undivided
- p fp, pink biotite-quartz-feldspar gneiss
- p fam, amphibolite
- p fca, gray, white, brown, or greenish diopside
rich calcitic marble
- p famp, predominantly amphibolite with some
gray biotite-quartz-feldspar gneiss
- p fg, gray garnet-biotite-gneiss, gray biotite
hornblende gneiss, and amphibolite

Columbille

Leo Hall

Apr 1968

HARTLAND formation

Xhs, predominantly gray or brown weathered garnet-biotite-muscovite-schist locally containing sillimanite and/or kyanite.

Xhw, white biotite-muscovite-quartz feldspar gneiss with local garnet.

Xhcp, interbedded brown weathered schist, ^(25-30%) white biotite-muscovite-gneiss, and amphibolite.

Xhm, amphibolite

(Transition)

Member C, full of sillimanite & feldspar

"~~Member~~ streaked?"