

2016 Q1, Q2 DCF Program Report Card: Juvenile Review Boards, Department of Children and Families

Quality of Life Result: Connecticut children grow up stable, safe, healthy, and ready to lead successful lives.

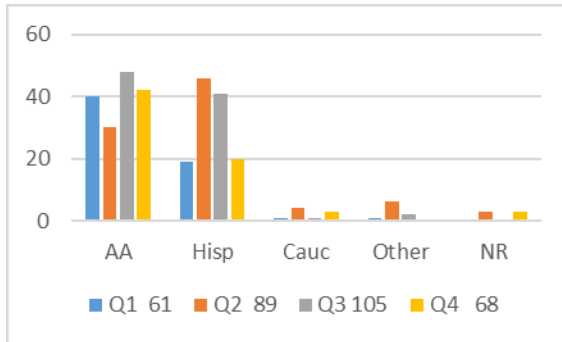
Contribution to the Result: Juvenile Review Boards (JRB) are organized groups of community volunteers such as police, youth service bureaus, schools and agency professionals that work to divert children and youth from the Juvenile Justice System. Children and youth between the ages of 7 and 17 who are first time misdemeanor offenders and youth who qualify under the Families With Service Needs (FWSN) statutes are eligible for JRB services.

Program Expenditures	State Funding	Federal Funding	Other Funding	Total Funding
SFY 15	\$656,500			\$656,500
SFY 16	\$656,500			\$656,500

Partners: Families, youth service bureaus, police departments, schools, community professionals, community volunteers, the courts and DCF.

How Much Did We Do?

Performance Measure 1: Intakes Completed



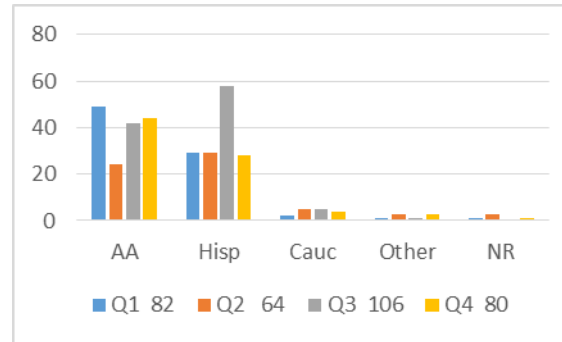
Story behind the baseline:

The number of intakes had been steadily increasing during the first 3 quarters of FY 15 but saw a sharp decline in Q4 to 68 from 105. New Haven had the lowest number of intakes in Q4 (10) less than half that it had in Q3 (24). This may be related to the decrease in referrals due to other community diversion efforts. Bridgeport's number of intakes (31) remains same from Q3 at 31 and continues to represent a significant improvement (Q1=12). This may be related to the jump in school based referrals. Hartford had a significant drop in intakes in Q4 (27) from Q3 (50). 62% of the total intakes in Q4 were AA youth and 29% were Hispanic youth. The city of Hartford is undergoing transition and the police liaison to the JRB program and the program lead at the City were both recently laid off during the last round of budget cuts.

Trend: ▼

How Much Did We Do?

Performance Measure 2: Panels Completed



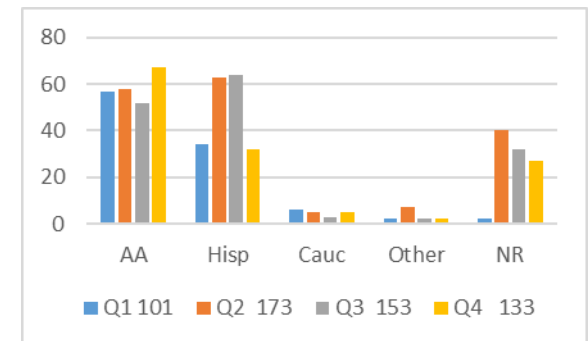
Story behind the baseline:

Q3 saw a good increase in panels being held. Hartford more than doubled the number of panels held in Q3 (56) as compared to Q2 (25). However, the number of panels fell from Q3 (106) to Q4 (80). A total of 332 panels have been held far in FY 15. Of these, 159 (48%) were held on AA youth and 144 (43%) were held on Hispanic youth. This is most likely due to the demographic of the locations (Hartford, Bridgeport, and New Haven) and the JRB overarching diversionary goal for minority youth. The decrease in panels may be due to an overall reduction in referrals and intakes in Q4, resulting in less panels held.

Trend: ▼

How Well Did We Do It?

Performance Measure 3: Referrals



Story behind the baseline:

Referrals declined from Q2 (173) to Q3 (153). Bridgeport had the highest number of Q3 referrals with 66 while New Haven had the lowest number with 15. Bridgeport reports a large number of inappropriate referrals) which results in spending time with youth and families who never receive a panel. New Haven attributes the low number of referrals to the prevention efforts of the city of New Haven and implementation of Youth Stat and in school mediation practices, both of which may result in no arrest and subsequent referral to the JRB. Hartford's referrals continue to decrease (q4=52), although they report the numbers can spike during local or national events, or a disruption at a community parade. The city of Hartford is undergoing transition and the police liaison to the JRB program and the program lead at the City were both recently laid off during the last round of budget cuts.

Trend: ▼

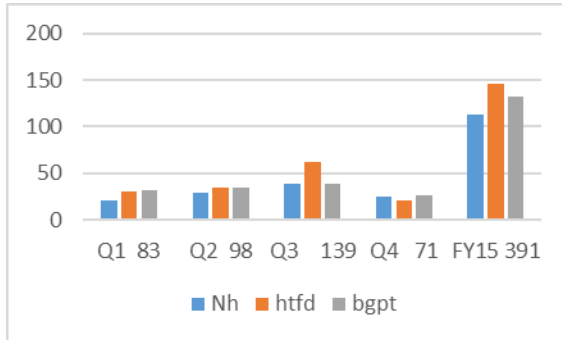
Trend Going in Right Direction? ▲ Yes; ▼ No; ◀▶ Flat/ No

2016 Q1, Q2 DCF Program Report Card: Juvenile Review Boards, Department of Children and Families

Quality of Life Result: Connecticut children grow up stable, safe, healthy, and ready to lead successful lives.

How Well Did We Do It?

Performance Measure 4: Discharges



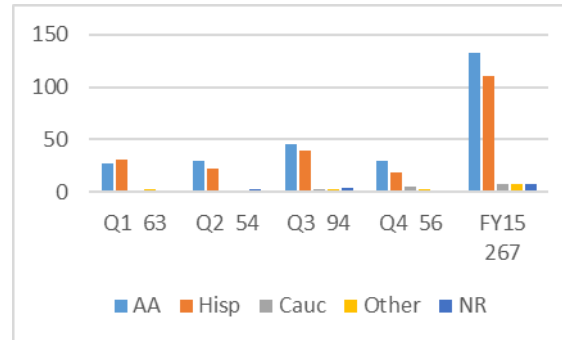
Story behind the baseline:

Discharges fall in to three categories: Successful, unsuccessful and administrative discharge. We are currently working with providers to refine the administrative discharge category. A totally of 391 youth were discharged from JRB in FY 15. These youth have made it through the referral, intake, and panel process, so there a discharge does indicate a level of engagement with the family and youth, no matter the outcome. The number of youth discharges had a high in Q3 (139) but then fell off to 71 in Q4. As previously stated, there is an overall trend of fewer intakes, referrals, and panels, resulting in fewer discharges.

Trend: ▼

Is Anyone Better Off?

Performance Measure 5: Successful Discharges



Story behind the baseline:

There were a total of 267 successful discharges in FY 15. 68% of all discharges were successful. Of the 267 successful discharges in FY 15, 133 (50%) were AA youth and 111 (42%) were Hispanic youth. Q4 saw the highest % of successful discharges with 79%, which is a marked improvement.

Trend: ▲

It is clear that the number of referrals, intakes, panels and discharges are down. This will require efforts with providers to continue to dialogue with their referral sources and working with referral sources to ensure an appropriate referral. Special effort and support of the Hartford JRB is required at this time, due to the political climate of the city and impact it is having on the JRB referral sources and contract officials. New Haven will be encouraged to focus their energy and efforts on JRB programming rather than community efforts. All providers will be encouraged to continue to improve their family engagement as well as the documentation of those efforts.

Data Development Agenda:

All programs are now required to use the statewide JRB data form, ensuring consistency across all JRB sites. Support regarding the new format will be given at each site. Ongoing conversations regarding a satisfaction survey for youth and family will be held with providers at quarterly meetings and during site visits.

Proposed Actions to Turn the Curve:

Trend Going in Right Direction? ▲ Yes; ▼ No; ◀▶ Flat/ No