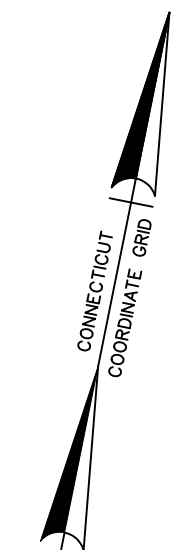
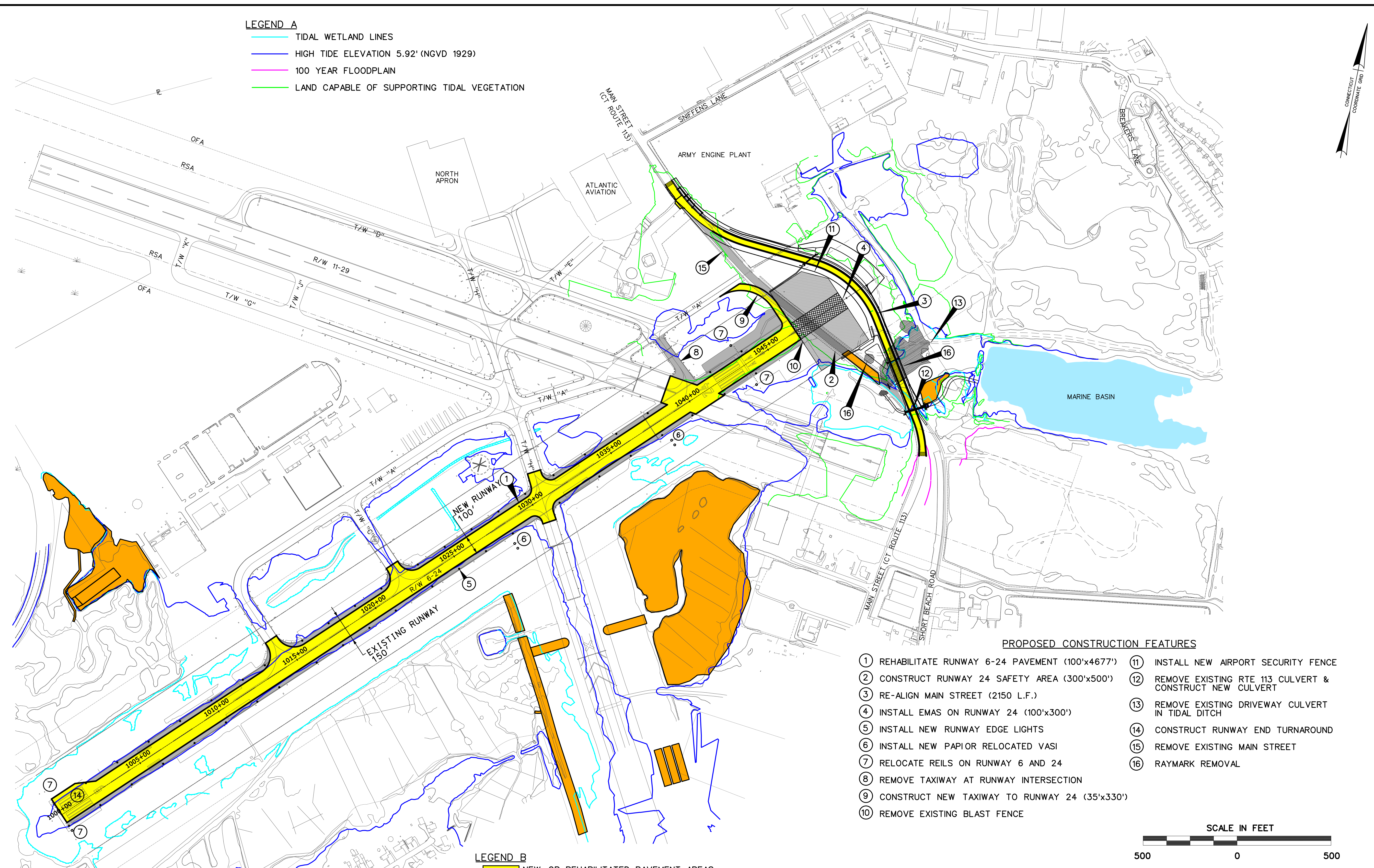
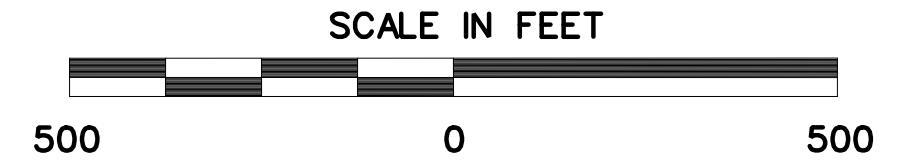


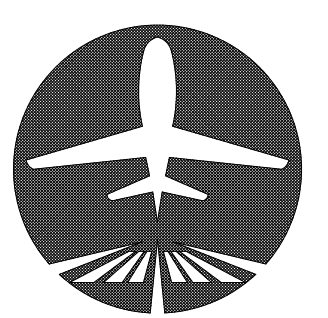
- LEGEND A**
- TIDAL WETLAND LINES
 - HIGH TIDE ELEVATION 5.92' (NGVD 1929)
 - 100 YEAR FLOODPLAIN
 - LAND CAPABLE OF SUPPORTING TIDAL VEGETATION



- PROPOSED CONSTRUCTION FEATURES**
- | | |
|--|---|
| ① REHABILITATE RUNWAY 6-24 PAVEMENT (100'x4677') | ⑪ INSTALL NEW AIRPORT SECURITY FENCE |
| ② CONSTRUCT RUNWAY 24 SAFETY AREA (300'x500') | ⑫ REMOVE EXISTING RTE 113 CULVERT & CONSTRUCT NEW CULVERT |
| ③ RE-ALIGN MAIN STREET (2150 L.F.) | ⑬ REMOVE EXISTING DRIVEWAY CULVERT IN TIDAL DITCH |
| ④ INSTALL EMAS ON RUNWAY 24 (100'x300') | ⑭ CONSTRUCT RUNWAY END TURNAROUND |
| ⑤ INSTALL NEW RUNWAY EDGE LIGHTS | ⑮ REMOVE EXISTING MAIN STREET |
| ⑥ INSTALL NEW PAPIOR RELOCATED VASI | ⑯ RAYMARK REMOVAL |
| ⑦ RELOCATE REILS ON RUNWAY 6 AND 24 | |
| ⑧ REMOVE TAXIWAY AT RUNWAY INTERSECTION | |
| ⑨ CONSTRUCT NEW TAXIWAY TO RUNWAY 24 (35'x330') | |
| ⑩ REMOVE EXISTING BLAST FENCE | |



- LEGEND B**
- NEW OR REHABILITATED PAVEMENT AREAS
 - PAVEMENT REMOVAL AREAS
 - RSA GRADING AREA
 - AIRPORT PERIMETER FENCING
 - EMAS
 - MITIGATION AREAS



**IGOR I. SIKORSKY MEMORIAL AIRPORT
STRATFORD, CONNECTICUT**



**RUNWAY SAFETY AREA PROJECT
DOT 15-336
IGOR I. SIKORSKY MEMORIAL AIRPORT
PROPOSED CONSTRUCTION FEATURES**

FIGURE

2