

# Creating Habitat for Pollinators at Massaro Community Farm



# Overview of Massaro Community Farm

- Mission: Keep Farming, Feed People, Build Community
  - Reclaim, restore and steward 57-acre Massaro farm property
  - Get farm operation up and running
    - Grow organic produce for Greater New Haven and Naugatuck Valley communities
- First year of production in 2010
  - Grew on 4 acres; 125 “Pioneer” CSA subscribers
  - As of 2018, growing on ~ 10 acres; 200 CSA subscribers, farmers’ markets and New Haven area restaurant sales
- Certified Organic
- Non-profit
- Committed to donating at least 10% of the produce we grow to hunger relief organizations
- Offer on-farm educational programs and events throughout the year

# Massaro full property view

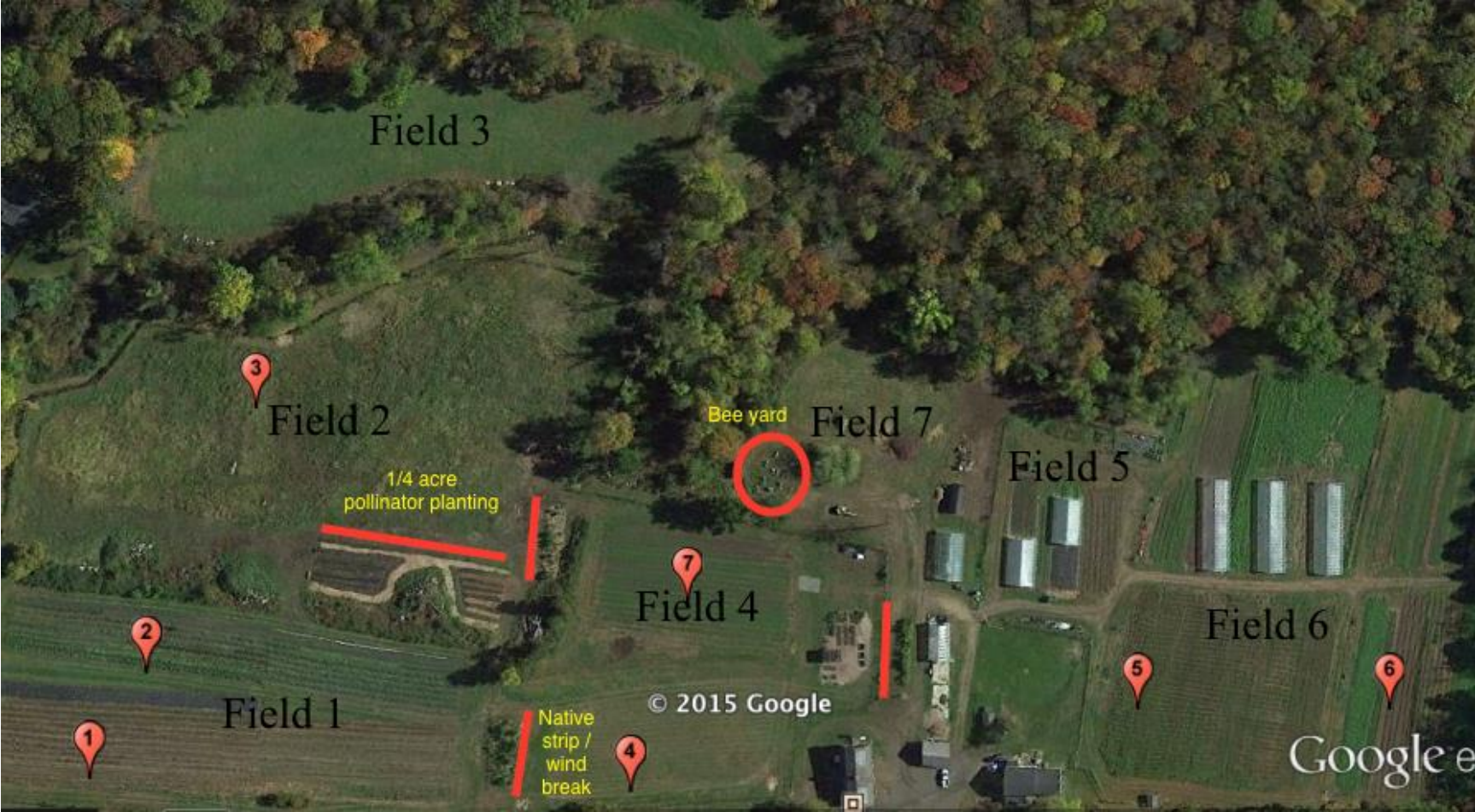


- **Why create on-farm pollinator habitat?**
  - Mimic nature, natural systems
    - Improve biodiversity
    - Attract beneficial insects
    - Natural predators can reduce pest pressures
    - Beauty
    - Revenue opportunities
- **Strategies to create on-farm pollinator habitat**
  - Make food sources continually available
    - Plant such that there are flowers as early in the season as possible, to as late in the season as possible
  - Supply a diversity of food sources
    - Use a mix of plant families and species
- **Where to create on-farm pollinator habitat?**
  - Field and property borders
  - Bed ends
  - Dedicated field rows in crop blocks
  - Inter-planted with crops
  - Wherever you can!

# Massaro fields



# Pollinator and native plantings



# ¼ acre pollinator planting



# Planting list spreadsheet

Genus/Species	Height	sun/shade	spacing/spread	dry/wet	flowers	notes
Achillea millefolium	2-4ft	sun	6"/2-4'	dry	late summer	
Actaea pachy 'Misty Blue'	2-3'	shade	12"/2-3'	avg	late spring	
Agastache 'Blue Fortune'	2-3'	sun	6"/2-3'	dry	summer/fall	
Agastache f. 'Golden Jubilee'	2-3'	sun	6"/2-3'	dry	summer/fall	
Agastache x 'Black Adder'	2-3'	sun	6"/2-3'	dry	summer/fall	
Aquilegia can. 'Little Lanterns'	1-3'	shade	12"/1'	avg/dry	spring	
Aquilegia canadensis	1-3'	shade	12"/1'	avg/dry	spring	
Asclepias inc. 'Ice Ballet'	3-4'	sun	12"/2'	dry	summer	
Asclepias incarnata	3-4'	sun	12"/2'	dry	summer	
Aster cord. 'Avondale'	2-3'	shade	12"/2-3'	avg		
Aster cordifolius	2-3'	shade	12"/2-3'	avg	summer/fall	
Aster div. 'Eastern Star'	2-3'	shade	12"/2-3'	avg	fall	
Aster divaricatus	2-3'	shade	12"/2-3'	avg	fall	
Aster lat. 'Lady in Black'	2-3'	sun	12"/2-3'	dry	fall	
Aster n-a 'Purple Dome'	2-5'	shade	12"/2-3'	avg	fall	
Aster novae-angliae	2-5'	shade	12"/2-3'	avg	fall	
Baptisia australis	3-4'	sun	24"/3-4'	dry	spring	
Baptisia tinctoria	3-4'	sun	12"/3-4'	dry	spring	
Calamintha nepeta	1-2'	sun	12"/1'	dry	spring-fall	
Coreopsis rosea	18"	sun	12"/2'	dry	spring/summer	
Coreopsis 'Sienna Sunset'	18"	sun	12"/2'	dry	spring/summer	
Coreopsis verticillata	18"	sun	12"/2'	dry	spring/summer	
Echinacea paradoxa	2-3'	sun	12"/18"-24"	dry	late summer/fall	
Echinacea pur. 'Magnus'	2-3'	sun	12"/18"-24"	dry	late summer/fall	
Echinacea purpurea	2-3'	sun	12"/18"-24"	dry	late summer/fall	
Eragrostis spectabilis - purple love grass	1-2'	sun	12"/2-3'	dry	late summer/fall	
Eryngium yuccifolium	4-5'	sun	12"/1-2'	dry	summer	
Eupatorium fistulosum	5-8'	sun	24"/3-4'	wet	fall	
Euphorbia amy. var. robbiae	1-2'	sun/shade	12"	wet	spring/summer	bad for woodchucks/rashes for people
Helenium autumnale	3-5'	sun	18"/3'	dry	late summer	
Helianthus divaricatus	4-6'	sun	24"/2-3'	avg	summer	
Helianthus sal. 'First Light' PP13150	4-6'	sun	24"/2-3'	avg	summer	
Heliopsis hel. 'Summer Nights'	4-6'	sun	24"/2-3'	avg	summer	
Heliopsis helianthoides	4-6'	sun	24"/2-3'	avg	summer	
Hibiscus moscheutos	3-7'	sun	24"/3-4"	wet	summer	
Monarda didyma 'Jacob Cline'	3-5'	sun	12"/2'	avg/wet	late summer	













# Field blocks



# Cabbage inter-planted with dill



# Flowering cilantro







# Tulsi/holy basil



# Buckwheat in onion paths



# Buckwheat in onion paths



# Buckwheat in squash paths



# Buckwheat potato paths



# Buckwheat cover crop



# Buckwheat behind tunnels





# Frost-killed buckwheat in fall brassicas



# Frost-killed buckwheat in fall brassicas



# Sudan grass and winter squash



# Oat/clover paths for long season crops like eggplant and peppers



# Oat/clover paths for cherry tomatoes



# Living paths for strawberries/onions



Thank you!

