

The Positive Power of Plants

Frederick Law Olmsted in
Connecticut

By: Mr. David K. Leff

www.davidkleff.com



PERRY MEMORIAL ARCH
ERECTED A.D. MCMX

PARK
CLOSE
AT
8 PM

STOP











Fred. Law Olmsted.



















In Prospect Park, Brooklyn, N.Y.

211352 (20)



By Messrs. Blossom and Sloat Sept. 1915 900-51

MUDDY RIVER SHOWING BAMBOO ON BOSTON SIDE.



900-51a



By Messrs. Blossom and Sloat Sept. 1915 900-52

LOOKING UP MUDDY RIVER FROM BROOKLINE SIDE. SHOWS BAMBOO
MASSES ON BOSTON SIDE.



900-52a



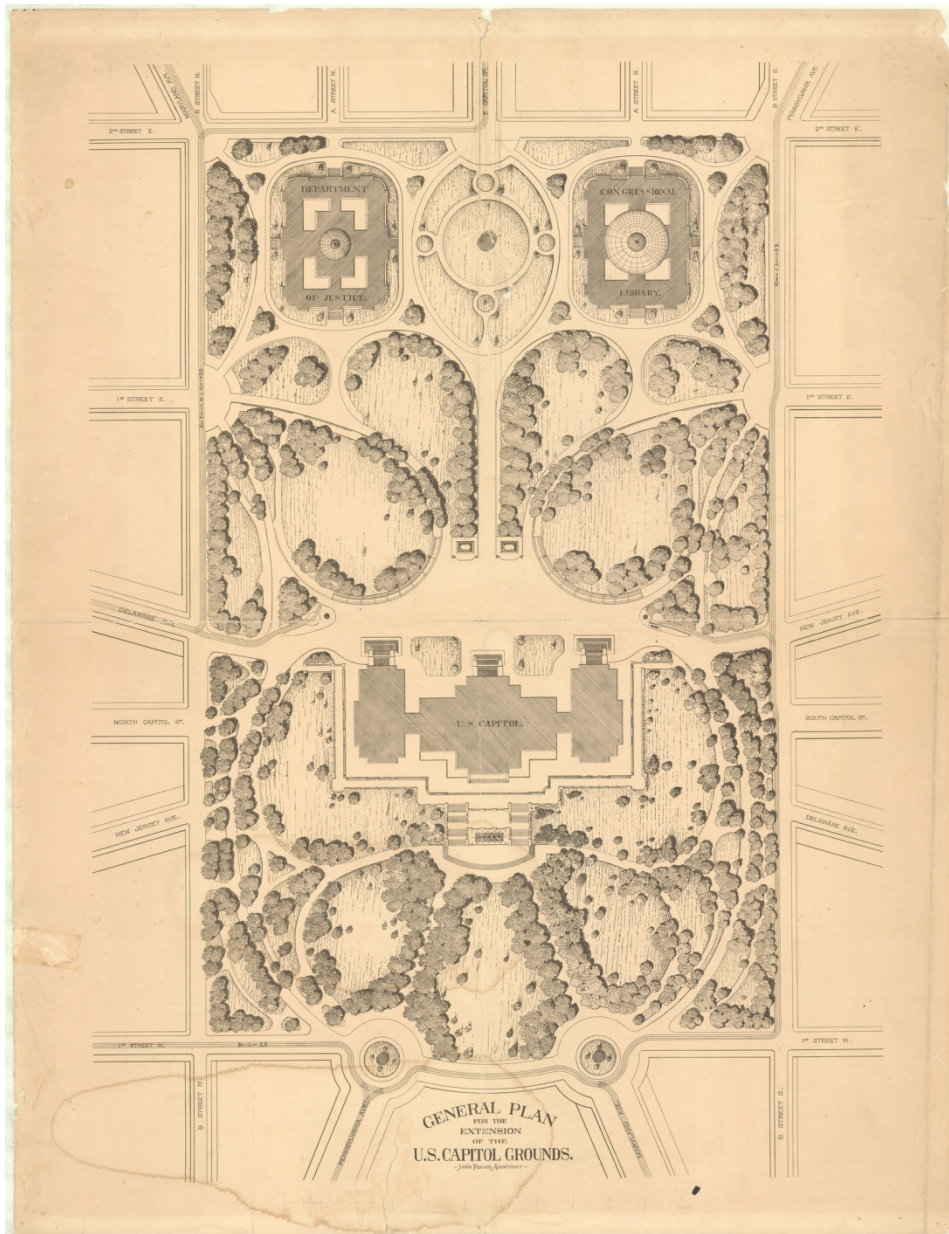
By Messrs. Blossom and Sloat Sept. 1915 900-53

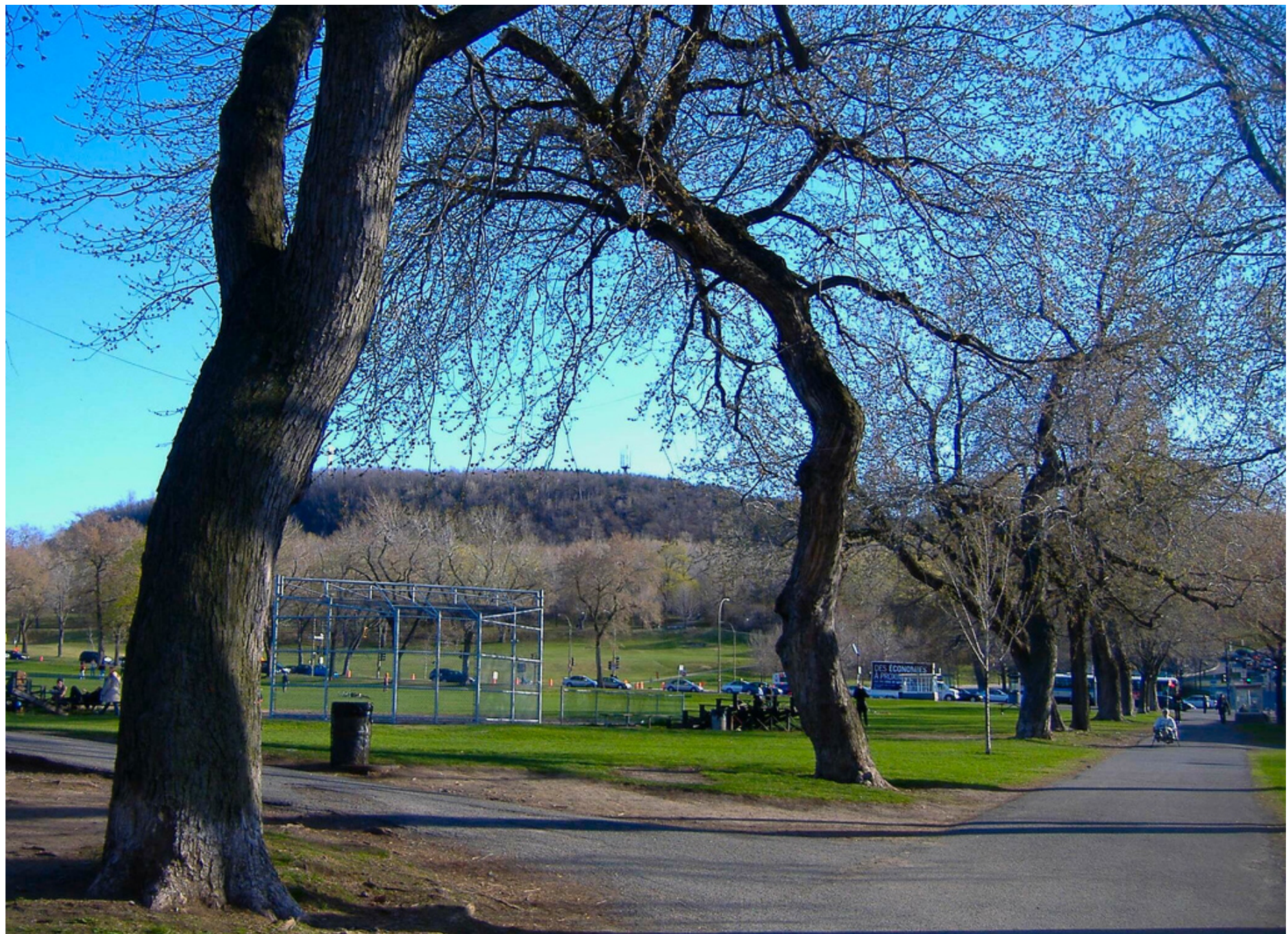
LOOKING UP LEVEE POND FROM WASHINGTON STREET BROOKLINE
SHOWING BRIDGE IN DISTANCE ALMOST COMPLETELY HIDDEN BY HEAVY
SHRUBBERY.

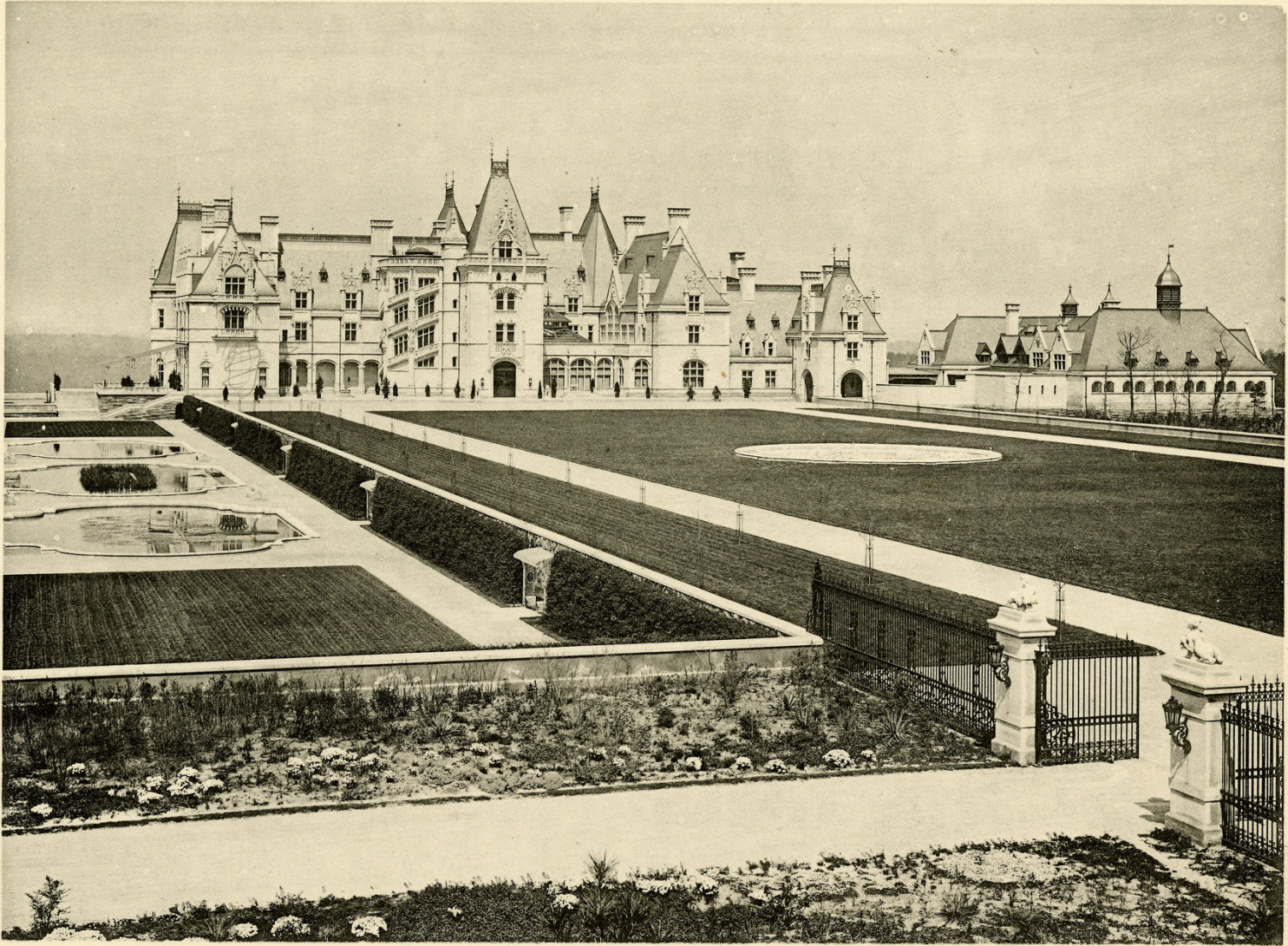
(900-54, 54 SAME AS NUMBER 53)



54







HOUSE FROM SOUTH TERRACE.





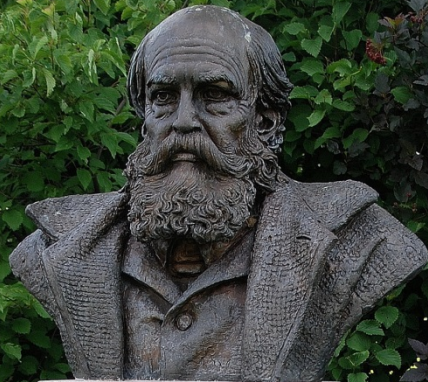












Frederick Law Olmsted
1822 - 1903

Founder of
American Landscape
Architecture

Commissioned by
John S. Butler
to landscape
these grounds
1860 - 1863

Sculpture by
Bruno Lucchesi
Dedicated
May 12, 2005













376-25







691 33 28



33 31



311 4-0



33 31







691-44



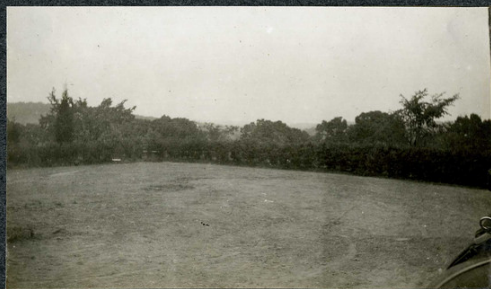


ZOO
MAINTENANCE
HISTORIC TROLLEY BARNs

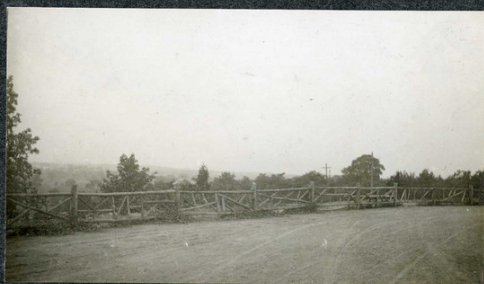
Club Car M1







316-9



316-10



316-11

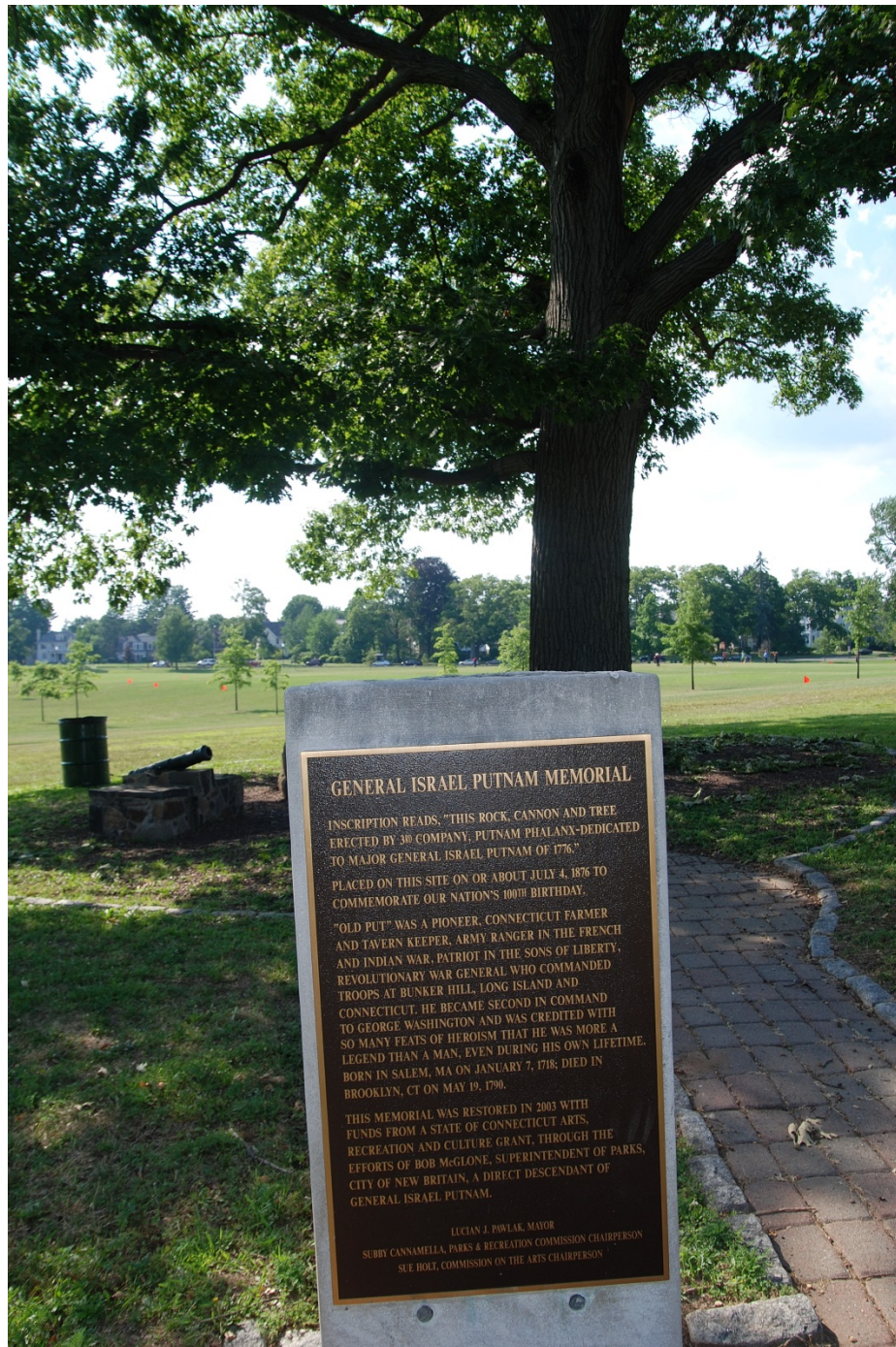


316-12









GENERAL ISRAEL PUTNAM MEMORIAL

INSCRIPTION READS: "THIS ROCK, CANNON AND TREE
ERECTED BY 3RD COMPANY, PUTNAM PHALANX-DEDICATED
TO MAJOR GENERAL ISRAEL PUTNAM OF 1776."

PLACED ON THIS SITE ON OR ABOUT JULY 4, 1876 TO
COMMEMORATE OUR NATION'S 100TH BIRTHDAY.

"OLD PUT" WAS A PIONEER, CONNECTICUT FARMER
AND TAVERN KEEPER, ARMY RANGER IN THE FRENCH
AND INDIAN WAR, PATRIOT IN THE SONS OF LIBERTY,
REVOLUTIONARY WAR GENERAL WHO COMMANDED
TROOPS AT BUNKER HILL, LONG ISLAND AND
CONNECTICUT. HE BECAME SECOND IN COMMAND
TO GEORGE WASHINGTON AND WAS CREDITED WITH
SO MANY FEATS OF HEROISM THAT HE WAS MORE A
LEGEND THAN A MAN, EVEN DURING HIS OWN LIFETIME.
BORN IN SALEM, MA ON JANUARY 7, 1718; DIED IN
BROOKLYN, CT ON MAY 19, 1790.

THIS MEMORIAL WAS RESTORED IN 2003 WITH
FUNDS FROM A STATE OF CONNECTICUT ARTS,
RECREATION AND CULTURE GRANT, THROUGH THE
EFFORTS OF BOB McGLONE, SUPERINTENDENT OF PARKS,
CITY OF NEW BRITAIN, A DIRECT DESCENDANT OF
GENERAL ISRAEL PUTNAM.

LUCIAN J. POWLAK, MAYOR
SUBBY CANNAMELLA, PARKS & RECREATION COMMISSION CHAIRPERSON
SUE HOLL, COMMISSION ON THE ARTS CHAIRPERSON



ISAAC D. BULL
1774 - 1849
MARY WATSON
WIFE OF ISAAC D. BULL
DIED 1854 AGE 80
JERUSA WATSON
DIED 1865 AGE 90
EBENEZER WATSON BULL
1779 - 1845
SOPHIA BUCKLAND
RELICT OF EBENEZER D. BULL AND OF
GEORGE HEACH SEN.
1801 - 1863
BUCKLAND WATSON BULL
1814 - 1883
SOPHIA MATILDA BULL
1866 - 1866

1791 — JOHN OLMSTED — 1873
CHARLOTTE LAW HULL
WIFE OF JOHN OLMSTED
1800 - 1826
OWEN FREDERICK OLMSTED
1837 - 1880
FREDERICK LAW OLMSTED
1827 - 1903
MARY CLEVELAND PERKINS
WIFE OF FREDERICK LAW OLMSTED
1830 - 1921
JOHN THEODORE OLMSTED
1846 - 1860
MARION OLMSTED
1862 - 1946

*Neither can they die
any more
for they are
equal unto the
angels*

1841 RESTORED 1955

FREDERICK LAW OLMSTED JR.
1870 - 1957
SARAH SHARPLES
WIFE OF FREDERICK LAW OLMSTED JR.
1875 -

MARY ANN BULL
WIFE OF JOHN OLMSTED
1801 - 1894
CHARLOTTE OLMSTED
1828 - 1832
MARY OLMSTED
1832 - 1875
OWEN OLMSTED
1836 - 1838
ADA THEODOSIA OLMSTED
1839 - 1846



805 ~~100~~ 1



805 ~~100~~ 2



805 ~~100~~ 3



805 ~~100~~ 4



806 140-5
806-5



806 140-6



807 140-7



806 140-8



By H. Blossom, Aug. 29, 1907 3277-1
BESIDE RED OAK 375, LOOKING WEST OVER THE
VALLEY OF THE NAUGATUCK.



By Blossom, Aug, 1907 3277-2
BESIDE RED OAK 375, LOOKING UP (WEST) AT
"THE LOOKOUT LODGE"



By Blossom, Aug, 1907 3277-3
NEAR MIDDLE OF SOUTH BOUNDARY, BESIDE OAK
345, LOOKING EAST.



By Blossom, Aug. 1907. 3277-4
NORTHEAST PART OF PROPERTY AT WHITE OAK 465,
LOOKING UP (WEST). PROPOSED ROAD TO RUN TO THE
LEFT OF THESE ROCKS.



By Blossom, Aug. 1907. 3277-5
NEAR MIDDLE OF SOUTH BOUNDARY BESIDE OAK
345, LOOKING WEST WHEN ROAD RUNS THERE.



By Blossom, Aug. 1907. 3277-6
THE BIG TULIP TREE.
Looking North.



By P.G. 1909.

3277-11



By R.F.J. Sept. '09

3277-12

MAIN ENTRANCE GATEWAY.
(Sample of masonry condemned) Taken
from outside.



By R.F.J. Sept. '09

3277-13

GATEWAY FROM INSIDE.

MAIN ENTRANCE. MR. HATCH, SUPERINTENDENT, IS STANDING
WHERE THE HIGH GATE POST WILL COME. TOP OF PLAN HE IS HOLDING
REPRESENTS THE HEIGHT OF POST. PLANTING DONE SPRING 1909
SEEN ON POST.



By P.G.

3277-14



By P.G.

3277-15



3277-16

By P.G.



By F.B.S

Sept. 1922

3554-10

New Athletic Field Looking North.



ELLERY PHILA.

The Grove